



**TRANSPORT
REFRIGERATION UNIT**

EKL-320-E48

KINGTEC GROUP CO., LTD.

EKL320-E48

Buy No Regret!



DESCRIPTION

Kingtec EKL320-E48 all-electric refrigeration unit is specifically designed for refrigerated trucks that have a capacity of 6-19 cubic meters, and it is battery-powered which eliminates the need for an engine-driven compressor to operate. This results in fuel and engine maintenance cost savings. It is more energy-efficient, environmentally friendly, and economical, which makes it a global development trend.

The refrigeration unit utilizes a DC48V power supply system with its own battery, enabling independent power supply. This eliminates the need for power supply considerations when installing the unit in a vehicle. The DC48V power supply system uses a custom-designed lithium iron phosphate battery module integrated with an intelligent BMS. This system possesses greater advantages over other power supply systems in terms of safety, cycle life, energy density, temperature range, and environmental protection. Made with a 10-year lifespan in mind, this system ensures stable performance that is safe, reliable, and maintenance-free, with national support.

SYSTEM COMPONENTS

- Condenser assembly
- Evaporator assembly
- Electric Scroll Compressor
- In cab Control and wiring Harness
- Heating function (options)(hot-gas heating)

REFRIGERENT (CHLORINE ZERO)

- EKL320-E48(R404A): 3.4Lbs

COMPRESSOR

- Electric Scroll Compressor
- PD2-28048B(28cc)
- Max recommend RPM :5000
- Contain oil-return device

DEFROST SYSTEM

- Hot gas defrost

AIRFLOW VOLUME

- EVK 300C Evaporator :1600m³/h (940 cuft / min)

ELECTRICAL DESCRIPTION

- DC options: DC 48V
- Total consumption current(Road compressor)

	DC 48V
EKL320-E48	55A

- Power consumption pre hour is 2.65 degrees

WEIGHTS

- Condenser assembly :172 Lbs
- Evaporator assembly :48 Lbs

WARRANTY SUMMARY

Specific terms of the Kingtec express warranty are available on request. Further, Kingtec excludes liability in contract and tort (including strict liability and negligence) for any special, indirect or consequential damages by reason of the installation or use of any covered product or its mechanical failure.

Refrigeration Capacity

Conditions at 30°C(86°F) ambient

ATP Standard



Refrigeration Capacity

Conditions at 38°C(100°F) ambient

National standard



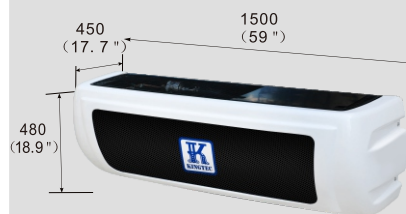
EKL320-E48 (R 404A)

Air return/on the road	Watts	BTU/hr
0°C (32°F)	3500	11900
-20°C (-4°F)	1705	5800
Kilowatt per or an hour		
2.65 kw		

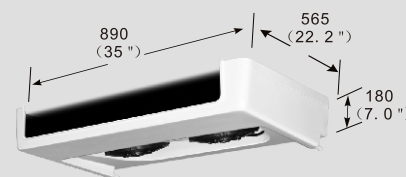
EKL320-E48 (R 404A)

Air return/on the road	Watts	BTU/hr
2°C (35°F)	3200	10880
-18°C (0°F)	1405	4777
Electric current		
55A		

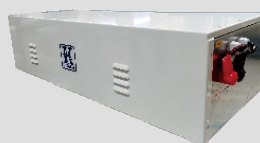
DIMENSION: mm (Inch)



EKL 320-E48 Condenser assembly



EVK 300C Evaporator Assembly



DC48V 400A Battery



AC220V to DC48V 80A charger

All electric 48V compressor

Battery pack

Specification	Lithium iron phosphate battery
Voltage	DC48V
Capacity(Kwh)	19.2
Endurance(hrs)	≥6
Charge module voltage protection	58.0V
Charge temperature protection	< 32°F or > 158°F
Discharge module voltage protection	43.2V
Discharge temperature protection	< -4°F or > 167°F

Charger

Specification	AC220V-DC48V
Charging current (A)	80-100
Battery pack charging time(20%-100%)	3.5hrs

KINGTEC GROUP CO., LTD.

Mail Address: P.O.Box 3255, Rancho Cucamonga, CA 91729

Company Address: 9453 E Ninth St. Suite B. Rancho Cucamonga. CA 91730

Office: +1 909 930 1734

Fax: +1 650 472 8091

Environmentally Friendly

Low noise, zero emission, energy-efficient and environmentally friendly.